



TOKAI UNIVERSITY SAPPORO

Japanese Language and Culture Study Program for International Students

Program Overview

Tokai University's Sapporo Campus is proud to relaunch its Japanese Language and Culture Program. With over 20 years of experience, our team has hosted over hundreds of students from 7 different countries, and we continue to innovate based on positive feedback from participants.

We boast one of the most affordable, modern and comfortable dormitories in Hokkaido, repeatedly ranked as one of Japan's best prefectures to live. The support of our friendly staff, teachers and students will ensure your smooth transition to life and studies in Sapporo, Japan's 5th largest city.

One of our greatest rewards is welcoming return visits from former participants, and hearing how our program has led to lifelong friendships and inspiration to pursue further studies and careers in Japan.

We look forward to welcoming you to Sapporo Campus and hope this brochure provides a preview of the opportunities that await you.

Tokai University in Sapporo

【Address】

1-1 1-Chome 5-Jo Minami-sawa, Minami-ku, Sapporo-shi, Hokkaido 005-8601



【Directions】

It is a 1 hr. 30 min. flight from Tokyo (Haneda Airport) to Sapporo (New Chitose Airport). The airport and city center (Sapporo Station) are linked by the JR rail service (30 min.) and a highway bus service (1 hr.).

From JR Sapporo Station, take the Nanboku Line subway to Makomanai Station (20 min.), then take a Jotetsu bus (No. Minami 96 or No. Kan 96) to Tokai Daigaku Mae stop (20 min.)



We look forward to welcoming you to Tokai !

**Taking a chance to study
abroad changed my life.
I hope your studies on
Sapporo Campus will also
launch your career in Japan.**



Mark Hamilton , Professor

Abundant Activities



Optional daily events are organized for international students including Movie Monday, Tutor Tuesday, Winning Wednesday Games Night, Thirsty Thursday Café, and Fitness Friday Events.

Students are also encouraged to join our many student-led clubs including the International Friendship Association (IFA). Language classes are supplemented with interactive cultural experiences and field trips.

Generous Support



Three Japanese Dorm Advisors live in the International Exchange Hall with international students to support campus life. A Mentor Team will also help you navigate the campus, make friends, and introduce you to the many charms of Sapporo. An International Programs Advisor serves as a liaison to aid communications between students and staff.

Rich Nature and Culture



Sapporo Campus is surrounded by a beautiful natural environment with various opportunities for outdoor adventure including nearby parks, hiking trails, ski slopes, and hot spring resorts. The city also boasts a year-round lineup of exciting cultural festivals that will allow you to immerse yourself in your studies. All four seasons in Hokkaido offer new scenery and experiences.

Course outline



	Summer program	Autumn program	Winter Program
Course name	Advanced Course for Japanese Language and Culture	Introductory Course for Japanese Language and Culture	Advanced Course for Japanese Language and Culture
Course period	June 20- July 21 (5 weeks) 2023	October 10 – December 15 (10 weeks) 2023	January 9 – February 13 (5 weeks) 2024
Dorm Check-in/Check-out	June 19, 2023/July 24, 2023	October 9, 2023/ December 17, 2023	January 8, 2024/February 15, 2024
Application period	March 1st – March 31st (in 2023)	June 12 – July 14 (in 2023)	September 1st – November 3rd (in 2023)
Maximum number of accepted students	13 students (without room sharing)		
Minimum required number of students	5 students		
Age restriction	20 years or older		
Subjects and hours of instruction	Japanese Language: 60 hours	Japanese Language: 120 hours	Japanese Language: 60 hours
	Practical Experiences: 5 hours	Practical Experiences: 10 hours	Winter Sport Experience: 10 hours
	Field Trip (to National Ainu Museum and Park (UPOPOY) in Shiraoi, Hokkaido: 7 hours	Field Trip in Hokkaido 14 hours	Field Trip in Hokkaido: 7 hours
	Total: 72 hours	Total: 144 hours	Practical Experience:2 Total 79 hours
Eligibility	More than one semester (approximately 6 months) Japanese language learning experience prior to their participation	It is expected that those students wishing to join this international program will work hard at learning Japanese language and culture during their participation.	It is expected that applicants for this international program have studied Japanese language for at least one semester (approximately 6 months) prior to their participation.
Dorm Advisor Students	Three dorm advisor students (Japanese students) are available to help the international students while they stay on Sapporo Campus.		



Application : The liaison offices of the respective institutions are asked to send the following documents for all applicants by air mail. Individually sent documents are not acceptable.

- 1) Completed application forms with a recently-taken photograph (4×3cm, no background) attached
- 2) Official certificates of student enrollment and college transcripts in English
- 3) A photocopy of each student's passport (Photo page)

▼Application Form

Please access the following link to download the Application Form.

▶ <http://www.sap.u-tokai.ac.jp/studyabroad/Application.doc>

E-Mail address ▶ kikaku@ml.tokai-u.jp (Tokai University Sapporo Campus Administrative Services Department, Planning and Coordination Section)



	Summer Program (5weeks)	Autumn Program (10weeks)	Winter Program (5weeks)
Tuition	114,000yen	228,000yen	170,000yen
Accommodation Fee ※	31,900yen	72,600yen	42,900 yen
Total	145,900yen	300,600yen	212,900yen

※Accommodation fees vary depending on the date of leaving the dormitory, so these are approximate amounts.

Payment of Tuition :

The payment of tuition must be completed before the program starts. Partner universities sending students to this program will be asked to collectively pay the tuition of all applicants to the following bank account:

Paying Bank: North Pacific Bank, Moiwa Branch

Payee: Tokai University Educational System

(Chairperson, Board of Trustees Yoshiaki Matsumae)

Address: 2-2-1-1 Kawazoe, Minami-ku, Sapporo, Hokkaido, Japan

Bank Code: 0501

Branch Code: 494

SWIFT Code: NORPJPJP

Account No.: 3620109



Living Costs and Prices

1. Prices of goods

Cafeteria meal



Set meal: 500yen



Ramen: 390yen



Curry and rice: 320yen

Products	Price
Rice (5 kg)	1,972 yen
Bread (1 kg)	479 yen
Milk (1,000 ml)	212 yen
Eggs (10 eggs)	227 yen
Apples (1 kg)	847 yen
Cabbage (1 kg)	146 yen
Carbonated drink (1 liter)	195 yen
Hamburger	214 yen
Gasoline (1 liter)	170 yen
Toilet paper (1,000 m)	695 yen
Hair cut	3,658 yen
Taxi (4 km)	1,519 yen

Source: the Portal Site of Official Statistics of Japan (the Retail Price Survey : as of August 2022)



◀Dormitory (International Exchange Hall)



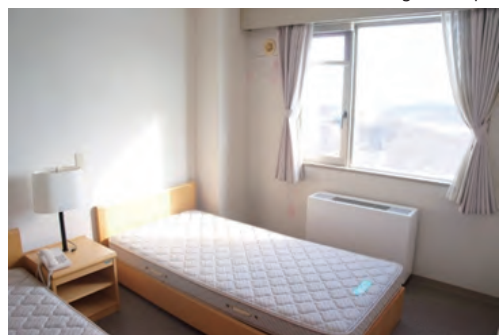
◀Shared kitchen



▲Single-occupancy dorm room



▲Living room



▲Double-occupancy dorm room



▲Individual ensuite bathroom unit

▼Facilities(Single/Double-occupancy dorm room)

STUDY DESK	CHAIRS	DESK LAMP	BED	SHOWER	TOILET	CLOSET	REFRIGERATOR
○	○	○	○	○	○	○	○

▼Common facilities

REFRIGERATOR	RICE COOKER	OVEN	KITCHENWARE	TELEVISION	WASHER
○	○	○	○	○	○



Dorm Advisor



Student Voice
Dorm Advisor 2019
Ayako Tanaka

During the 2019 fall semester, I lived together for two and a half months with international students as a Dorm Advisor (DA) in Tokai University's International Exchange Hall. I lived with two other Japanese DAs, eight students from Sweden, and three from Hawaii. The dorm living room and kitchen were a place of relaxation for everyone to gather, but everyone also had a room of their own with a private bath and space to study. By learning and experiencing the culture of Japan together, including the unique charms of Hokkaido, we enjoyed many new discoveries and bridged the distance between us. We also learned about the culture of Sweden and Hawaii. During that time, I was able to once again feel that communication is not just about language. Although we had some misunderstandings, it was more important to laugh and think together.

Would you like to spend a few months of your life in a multicultural environment? Do you like to create new ideas? Are you interested in making lifelong friends? We will always warmly welcome you and greatly look forward to international students coming to Sapporo Campus. We will prepare for you to stay in Japan with peace of mind, so please visit our campus. I wish for your happiness from the bottom of my heart.



Faculty introduction



Hiromi Yauchi

皆さん、こんにちは！矢内弘美と申します。私は、「文法」のクラスを担当しています。よろしくお願いたします。新しい言語を学ぶことは視野を広げてくれます。そしてこの経験はみなさんの人生の宝物になるでしょう。札幌キャンパスは、学生同士の距離が近く、たくさんの友達ができるでしょう。それはもう1つの素晴らしい宝物になると思います。ぜひ札幌キャンパスと一緒に学びましょう！

Hello, everyone. My name is Hiromi Yauchi. I teach Japanese Grammar classes.

Learning a new language broadens your horizons, and your study experience will be a treasure of your life. On the Sapporo Campus, students interact closely and you will make many lifelong friends. Let's study together on the Sapporo Campus!

Japanese Communications



Students will be able to communicate in Japanese using intermediate-to-advanced level grammar and vocabulary. In addition, they will be able to obtain information related to the field of study they are interested in. Students will study about Japanese culture, language and how Japanese people communicate through listening, conversation, role play, presentation, and project-based learning.

Kanji (Chinese characters)



You may have a negative image of kanji as difficult, complicated and hard to remember, but in this class, use illustrations and stories to illustrate the origins of kanji and make it fun to learn through art.

We use dramas, movies and manga as examples to have fun while learning Japanese. In order to improve your Japanese further, you need to speak and write repeatedly without being shy. That seems to be the fastest way to improve your Japanese.

To all the foreign students reading this once you've learned some of the basics, the only thing left to do is practice.

Why don't you join us in kanji class and have fun learning?

Grammar



In advanced grammar classes, students will study vocabulary and grammar points on various topics related to Japanese society and culture, discuss their opinions with each other in class, summarize and present them in a report. Students will be expected to be able to write coherent sentences, but are encouraged to write their reports on their own without worrying about Japanese mistakes.

In elementary and intermediate classes, Practice grammar items so that you can use them in conversation and in writing. You will have fun practicing with your classmates in pairs and groups. Try to speak positively in class and don't worry about making mistakes.



Visit to a Upopoy National Ainu Museum and Park



Experiencing winter-sport activities



Moai Statues in Makomanai Takino Cemetery



Lunch with Dorm Advisors

Cultural Experience Workshops



Tea Ceremony Workshop



Kimono Workshop

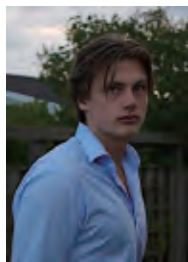


Noh Theatre Workshop



Japanese Calligraphy (Shodo)

Study abroad experience

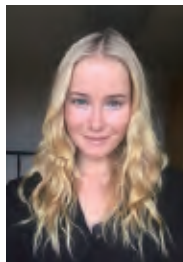


Testimonial from Martin Bergström (University of Gothenburg, Fall Semester 2019)

As a student from Sweden, a country so different to Japan, I could not have expected a better welcome. At Tokai University, I experienced well-planned events, as well as spontaneous trips with Japanese students who quickly became friends. The Mentor Program allowed us to connect with Japanese people our age, learn about their culture, and also greatly improve our speaking skills. I met the most humble people during my stay where students, as well as teachers, always did their absolute best to help me in many ways. I recommend everyone join Tokai Sapporo's Japanese Language and Culture Program.



Martin, 3rd from the left, with his Mentor Team



Testimonial from Johanna Norrman (University of Gothenburg, Fall Semester 2018)

I will never forget my time as a student at Tokai University. The teachers at this school are passionate about their subjects and supportive of their students. Regardless of your language abilities everyone was made to feel welcome. My favorite memory of studying here would be all the friends I made, both in fellow classmates and the Japanese students at the school. Together we went on cultural trips and the school helped to arrange many fun events such as a tea ceremony and language cafes. I will treasure those experiences for the rest of my life.



Johanna, front row 3rd from the left, Kimono Event



Testimonial from Shannon Fermahin (University of Hawaii West Oahu, Fall Semester 2019)

To anyone able to study at Tokai University in Hokkaido, you will not regret it. The 10-week program will help you gain better communication/grammar skills, & become more confident in writing and identifying kanji, and interact with many Japanese students. At first, I was scared to practice my Japanese with local students, but as you get to know them, they are willing to help. Tokai University is a beautiful campus, & everyone gets along well. I built relationships with over 50 students. My new friends showed me around Sapporo & introduced their culture. I'm planning to return soon to reminisce about our great times together.

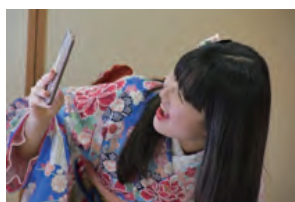


Shannon, left of center in blue aloha shirt



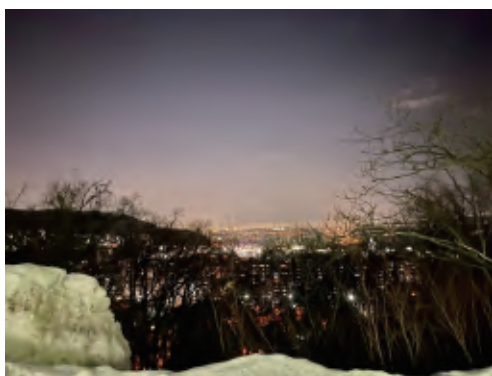
피은정 PIEUNJEONG (Sangmyung University, Winter Semester 2019)

동해대학 단기 어학연수를 통해 많은 것을 느꼈습니다. 일본에 단기로 거주하면서 한국인 친구들뿐만 아니라 일본인 친구와 교류할 수 있어서 좋았습니다. 학교 커리큘럼과 DA 친구들, 대학교 친구들과 지내면서 일상 회화를 배울 수 있는 최적의 조건이었습니다. 또한 이를 통해 문화의 차이점을 느끼고 이해하는 과정에서 일본에 대한 이해도가 넓어진 것 같습니다. 한일 관계가 악화된 시점에 다녀오게 되어서 부정적인 인식이 있지 않을까 걱정되었지만 환영해 주는 그들에 안심할 수 있었습니다. 친절하게 대해주시던 선생님들, 일이 생겼을 때 자기 일처럼 걱정해 주던 DA 친구들, 즐겁게 공동생활을 할 수 있게 해준 한국인 친구들과 함께한 단기 어학연수 추억들은 잊지 못할 것입니다.



김수현 KIM SOOHYUN (Sangmyung University, Winter Semester 2019)

동해 대학교 단기 어학연수를 통해 언어를 배우고 동시에 한국과는 비슷한 듯 다른 생활규칙을 알게 되었고, 다양한 교류활동을 통해 언어의 장벽을 넘어 친구가 생겼습니다. 쉬는 날 떠난 오후, 스스키노, 조잔케이 여행은 저에게 홋카이도의 매력을 알게했습니다. 35일간의 어학연수는 저에게 다신 잊을 수 없는 추억이 되었습니다.



강은향 KANG EUNHYANG (Sangmyung University, Winter Semester 2019)

저는 동해대학에서의 스키캠프가 가장 기억에 남습니다. 한국의 스키장과 달리 자연설에서 스키를 즐길 수 있다는 점이 너무 좋았습니다. 스키 외에도 온천이나, 맛있는 음식, 아름다운 자연 등 즐길게 많아 좋은 추억이 되었습니다. 나중에 기회가 된다면 꼭 다시 방문하고 싶어요!





Hokkaido's largest city has a population of 1.9 million. The city has numerous must-see sightseeing spots, including the Clock Tower, a symbol of the city, and Mt. Moiwa, one of the "top three new night views of Japan."

Odori Park serves as a venue for various events year round, and the Tanukikoji shopping arcade is a place where you can see new fashion trends, and find many souvenir shops.

Facilities on the Sapporo Campus



Cafeteria
The cafeteria is popular with students and is often used for parties and gatherings.



Cross-country Skiing Course
In the winter months, the campus slopes are used for cross-country skiing practices.



Tokai Arena
Tokai Arena is the main gymnasium, built in 2015, which boasts the latest training facilities and equipment.









Tank Lab
The tank lab has tanks of various sizes that are home to tropical fish as well as species such as sea urchin and abalone.



Design Lab
The design lab provides the ideal environment for creating and innovating



	< Summer Program >	< Autumn Program >	< Winter Program >
 <p>Application Period</p>	<p>③ 3/1-3/31</p>	<p>⑤ 5/1-6/20</p> <p>⑥</p>	<p>⑨ 9/1-11/3</p> <p>⑩</p>
<p>Everyone is encouraged to arrive on the same flight whenever possible.</p>  <p>Enter the dormitory</p>	<p>⑥ June</p>	<p>⑩ October</p>	<p>① January</p>
 <p>Orientation</p>	<p>⑥ June</p>	<p>⑩ October</p>	<p>① January</p>
 <p>Course Period</p>	<p>⑥ June-July (5 weeks)</p> <p>⑦</p>	<p>⑩ October-December (10 weeks)</p> <p>⑫</p>	<p>① January-February (5 weeks)</p> <p>②</p>
 <p>Graduation Ceremony</p>	<p>⑦ July</p>	<p>⑫ December</p>	<p>② February</p>
<p>Everyone please return on the same plane if at all possible.</p>  <p>Leave the dormitory</p>	<p>⑦ Last July</p>	<p>⑫ Mid-December</p>	<p>② Mid-February</p>